



DIDJ. You choose. You play. You rule.

Play and learn your way with the DIDJ™ custom gaming system, combining video game fun with core school skills for 1st to 4th grade players (6-10 years). Customize the gameplay by creating your own DIDJ avatars (or *Didjis*) and downloading new features (or *Micromods*) to make it your game. Customize the learning included in each game by downloading your own spelling list or choosing the skills that you are studying in school.

leapfrog.com

Product Guide & Instructions

This guide contains important information. Please keep it for future reference.



Getting Started

Read all Cautions and Warnings before using. / Lire toutes les mises en garde et autres avertissements avant usage.

Complete three easy steps to start gaming and learning with the DIDJ™ custom gaming system.

I. Set up the DIDJ Handheld

Start the DIDJ handheld by sliding the On/Off button.

1. Select a country (required the first time only).
2. Create a profile by entering a nickname and grade or year in school. This information can be changed at any time from the About Me menu screen.
3. The DIDJ handheld will store profiles of up to three players and a guest. To delete a player profile, go to the About Me menu screen on the handheld.
4. Select a profile on the Player Select screen to begin.

II. Install the LEAPFROG® Connect Application on the Computer

Once the DIDJ handheld has been set up, install the LEAPFROG Connect Application. Installing the application and registering the DIDJ handheld gives parents access to the LEAPFROG® Learning Path, a powerful tool that lets them see their kid's learning progress and customize the learning.

How to install:

1. Insert the included CD-ROM into your computer's disk drive to install the application.*
2. Follow the instructions on the computer screen to complete the installation process and to register.

* If you already have the LEAPFROG Connect Application installed for another device, you will still need to insert the included CD into your computer's disk drive to install your DIDJ software.

Images represent gameplay only and do not reflect actual screenshot pixelation.

Product Information

III. Connect the DIDJ™ Handheld to the Computer

1. Turn on the DIDJ handheld and connect it to the computer using the included USB cable.
2. Navigate to the DIDJ view of the LEAPFROG® Connect Application.
3. Choose a profile and select the On My DIDJ button from the left navigation bar.
4. Transfer the game *JetPack Heroes* onto the DIDJ handheld.
5. Disconnect the DIDJ handheld from the computer and you are ready to play!

Note: During normal play, the DIDJ handheld will automatically turn off after 5 minutes of inactivity. Turn on the handheld by pressing the On/Off button. While the DIDJ handheld is connected to the computer, it will not shut down automatically. Wait until the device has finished downloading and can be disconnected before turning off the handheld.

Navigating the DIDJ Handheld

The DIDJ handheld has three main menu areas. Use the D-pad to scroll through the menu icons. Then press the A button to select.

1. **My Games**—Launch a cartridge or download games by selecting a game icon on the menu wheel.
2. **My Didjis**—Download and display up to 10 customized *Didji* characters.
3. **My DIDJ**—Track and change the DIDJ handheld preferences.
 - a. My Screens—Customize the colors/colours of the DIDJ menu screens and change the screen contrast level.
 - b. My Stuff—View the *Micromods* earned to customize the games.
 - c. About Me—Change the name and grade or delete a profile.

Warning: Deleting a profile on the handheld will delete all game and curriculum tracking, as well as any achievements earned for that profile, since the last time the handheld was connected to the computer.

Instructions For Play

DIDJ. Make It Your Game!

The DIDJ handheld offers a universe of options for gaming and learning. Connect the handheld to the computer to customize the game.


Create an Avatar

Connect the DIDJ handheld to the computer. Through the LEAPFROG® Connect Application profile, use the *Didjator* to create a custom *Didji* character. Then download the character to the handheld to make it available to play in any game that uses *Didji* characters.

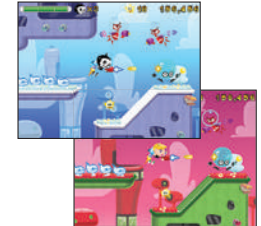


Product Information

Earn Cool Rewards

 Earn *Badges* for in-game achievements, such as finishing a level or answering 10 correct questions in a row. See the *Badges* that can be earned by going to the *Badges* screen in each game.

Each *Badge* is worth a particular number of *Bitz*, or points, that can be traded to customize any DIDJ™ game. Just connect the handheld to the computer to update the number of *Bitz* each player has earned. Use the LEAPFROG® Connect Application to trade your *Bitz* for *Micromods* such as new spaceships, in-game backgrounds or music that will change each game, and then download them to your handheld.



Because data storage space is limited, it is important to connect the DIDJ handheld to the computer periodically to upload game progress and new *Bitz* earned.

DIDJ Learning Edge

The DIDJ handheld teaches important school skills such as mathematics, spelling and language arts. Each game has multiple learning levels that progress in difficulty, challenging players to learn more advanced concepts as they play. The DIDJ handheld dynamically advances the learning level, adjusting the curriculum to each player's skill level so that the learning is neither too easy nor too hard.

Use the Hint button to access tailored tutorials that will explain new learning concepts and how to apply a new skill.

Customize the Learning

The learning included in each DIDJ game can be customized by connecting the DIDJ handheld to the computer. Use the LEAPFROG® Connect Application to create a spelling list from over 10,000 words, for example, or to focus on a particular skill or concept like learning to multiply by 7s and 8s. Then, download the customized learning skills and use the DIDJ handheld to get ready for a test or to get practice in key school skills.



See and Share Learning Success

Every time the handheld is connected to the computer, the system will update each player's learning and gaming progress. Parents can see and celebrate the learning by going online at leapfrog.com/learningpath or going to the LEAPFROG® Learning Path page of the LEAPFROG® Connect Application.


Product Information

JetPack Heroes

The DIDJ™ handheld includes a game that can be downloaded at no cost from the LEAPFROG® Connect Application. Once the game has been downloaded to the handheld, select the *JetPack Heroes* game icon and strap on your jetpack—it's time to save the world!



Game Background

Deep beneath the surface of the happy planet, Energy Buddies  create a network of energy that provides light and life for the planet. But an evil villain, Gooracha, and his henchman from a distant galaxy have kidnapped the Energy Buddies.

Your mission is to use your mathematics skills to save the captured Energy Buddies from their prisons and defeat Gooracha and his goons. Along the way, rack up your score, prove your prowess and earn *Badges* to customize your game.

Make It Your Game!

Play *Jet Pack Heroes* with your customized *Didji* character or buy *Micromods* such as game backgrounds, secret keys and new spaceships to change your game. *JetPack Heroes* teaches and reinforces mathematics skills for 1st through 4th grade players (ages 6-10), including addition, subtraction, multiplication and division. Play at your grade level or use the LEAPFROG® Connect Application to customize the mathematics skills you want to learn.

Access a full *JetPack Heroes* Game Guide by going to leapfrog.com/didj.

Country Selection

Selecting your country of residence adjusts the phonetic pronunciation and spelling of some letters and words. If you need to change your country selection, follow these steps:

1. Hold down the Left Shoulder button and B button at the same time.
2. Turn on the handheld while holding both buttons until the Country Select screen appears.
3. Wait for the Health & Safety screen to finish.
4. When the LEAPFROG® Legal screen comes on after the Health & Safety screen, follow these steps:
 - A. Hold down the Left Shoulder button and B button at the same time.
 - B. Wait for the Country Code screen to appear.
 - C. Release the buttons.
 - D. Choose the Country Code you prefer.



See the Learning.™

Learning experiences are never one-size-fits-all. That's why we created an online LeapFrog Learning Path that can be custom-tailored to shape and inspire each child's unique learning journey. Connect and see what they're learning, how they're growing and, most importantly, who they're becoming.

leapfrog.com/learningpath



Check out the ever-growing DIDJ™ custom gaming system library!



© 2008 VIACOM INTERNATIONAL INC.
Created by Stephen Hillenburg.



© 2008 Lucasfilm Ltd. & TM.



© 2008 VIACOM INTERNATIONAL INC.
All rights reserved.
SPONGEBOB created by Stephen Hillenburg.





NANCY DREW is a trademark of Simon & Schuster.
© WBEL. (s08)

Instructions for Care

FOR INDOOR, DRY-LOCATION USE ONLY.


Keep food and beverages away from this product. Do not spill liquid of any kind on this product as it may render it inoperative. Clean with a slightly damp cloth in cold water. Do not use soap, detergent or other chemicals. Never submerge the unit in water. Allow to dry before re-use. Avoid prolonged exposure to extreme temperatures and direct sunlight. Avoid dropping the unit. Never try to dismantle the unit.


 **CAUTION:** Routinely check this toy for proper and safe condition. If there is damage or broken parts, remove toy from use.

 **CAUTION:** If for any reason the screen (display) is fractured or cracked, immediately remove this product from use and contact LeapFrog Consumer Services for replacement if under warranty.

Soins et entretien

Tenez les produits à l'écart de la nourriture et des boissons. Ne jamais verser le moindre liquide sur ce produit car cela pourrait l'endommager ou altérer son fonctionnement. Nettoyez les produits avec un chiffon légèrement humide (eau froide). N'utilisez pas de savon, de lessive, ou d'autres produits chimiques. Ne plongez pas le produit dans l'eau. Attendez qu'il soit sec avant réutilisation. Évitez l'exposition à des températures extrêmes et à la lumière directe du soleil. Évitez de faire tomber le produit. N'essayez jamais de le démonter.

 **ATTENTION :** Vérifiez régulièrement que ce jouet est en bon état et qu'il ne présente pas de danger. Dans le cas contraire (par exemple, s'il est cassé à certains endroits), tenez ce jouet hors de portée des enfants.

 **ATTENTION :** Si pour quelque raison que ce soit, l'écran (d'affichage) est brisé ou fendu, mettez immédiatement ce produit hors de portée des enfants. Contactez ensuite le Service clientèle de LeapFrog pour qu'il soit remplacé (si ce produit est sous garantie).

Battery Information

Requires 4 AA (called LR6 in some countries) alkaline batteries, not included.

Battery Installation and Removal Instructions

1. Locate the two battery compartments on the back of the handheld. Each compartment holds 2 AA (called LR6 in some countries) alkaline batteries.
2. Open each battery door with a screwdriver, coin, or other household tool by pressing straight down in the open slot and sliding the battery compartment out.
3. If used or spent batteries are present, remove these batteries from the unit by pulling up on one end of each battery.
4. Install new batteries as shown in the polarity (+/-) diagram inside the battery compartment.
5. Replace battery door securely.

À propos des piles

Nécessite quatre piles alcalines AA (aussi appelées LR6 dans certains pays), vendues séparément.

Instructions d'installation et de désinstallation des piles

1. Repérez les deux compartiments des piles au dos de l'appareil. Chaque compartiment contient 2 piles alcalines AA (appelées aussi LR6 dans certains pays).



2. Ouvrez le cache de la batterie avec un tournevis, une pièce de monnaie ou tout autre outil domestique en appuyant fortement sur la rainure d'ouverture et en faisant glisser le compartiment des piles hors de l'appareil.
3. S'il contient des piles usagées ou déchargées, retirez-les de l'appareil en tirant sur l'une des extrémités de chaque pile.
4. Installez les nouvelles piles comme indiqué dans le diagramme de polarité (+/-) affiché dans le compartiment des piles.
5. Remplacez correctement le cache de la batterie.

Battery Safety

Batteries are small objects and may pose a choking hazard for small children. Batteries must be replaced by an adult. Follow the polarity (+/-) diagram in the battery compartment. Promptly remove spent batteries from the toy to avoid leaking. Dispose of used batteries properly. Remove batteries for prolonged storage. Only batteries of the same or equivalent type as recommended are to be used.

DO NOT incinerate used batteries.

DO NOT dispose of batteries in fire, as batteries may explode or leak.

DO NOT mix old and new batteries or types of batteries (i.e., alkaline/standard).

DO NOT recharge non-rechargeable batteries.

Rechargeable batteries are only to be charged under adult supervision.

(For Europe only) Rechargeable batteries are to be removed from the toy before being charged.

DO NOT short-circuit the supply terminals.

Sécurité relative aux piles

Les piles sont des objets de petite taille. Le remplacement des piles doit être effectué par un adulte. Respectez le schéma de polarité (+/-) reproduit dans le compartiment des piles. Enlevez rapidement les piles usagées du jouet. Suivez les procédures adéquates pour vous débarrasser des piles usagées. Retirez les piles en cas de non-usage prolongé. Utilisez uniquement des piles ou accumulateurs du type recommandé ou d'un type équivalent. Les piles incluses dans les produits lors de l'achat sont uniquement destinées aux démonstrations en magasin et doivent être remplacées pour améliorer les performances du produit.

NE PAS incinérer les piles usagées.

NE PAS jeter les piles au feu car elles peuvent exploser ou fuir.


NE PAS mélanger piles usagées et piles neuves, ni différents types de piles (c'est-à-dire alcalines/standard).


NE PAS recharger des piles non rechargeables.

Les piles rechargeables ne doivent être chargées que sous la supervision d'un adulte.

(Uniquement pour l'Europe) Les piles rechargeables doivent être retirées du jouet avant d'être chargées.

NE PAS court-circuiter les terminaux d'alimentation.

 **WARNING:** Cords could be a strangulation hazard. Keep out of reach of children under 3 years of age. Children pulling on the cord could cause the computer monitor, TV or other equipment to which the device is connected to fall with the possibility of property damage, serious personal injury, or death. Adult supervision required during play.

 **AVERTISSEMENT :** Les cordons peuvent représenter un risque d'étranglement. Tenez-les hors de portée des enfants de moins de 3 ans. En tirant sur le cordon, un enfant peut causer la chute de l'écran de l'ordinateur, de la télévision ou d'un autre appareil connecté à ce dispositif et provoquer des risques de dommages matériels, de blessures graves, voire même la mort. L'utilisation de ce jouet doit avoir lieu sous la supervision d'un adulte.

Protect Your Hearing

⚠ Long-term exposure to loud sounds, at high volume, may result in permanent hearing loss. When using headphones or ear buds, it is recommended that the product is listened to at lower volumes for shorter periods of time. Set the volume while in a quiet environment; turn the volume down if you cannot hear people speaking near you. Limit the listening time to 90 minutes, followed by a quiet period. The louder the volume, the less time required before your hearing may be affected. If you experience ringing in your ears or hear muffled speech, stop listening and have your hearing checked.

Protégez votre ouïe

⚠ Une exposition durable à des sonorités trop fortes peut entraîner une perte définitive de l'ouïe. Lorsque vous utilisez le casque ou les écouteurs bouton, il est conseillé de baisser le volume et réduire le temps d'écoute. Réglez le son lorsque vous êtes dans un endroit calme et baissez-le si vous n'entendez pas les personnes qui parlent autour de vous. Limitez le temps d'écoute à 90 minutes, puis accordez-vous un moment de tranquillité. Plus le volume est élevé, plus il y a de chances que votre ouïe soit rapidement touchée. En cas de bourdonnement dans les oreilles ou si vous entendez des voix sourdes, arrêtez immédiatement d'écouter ce produit et faites contrôler votre ouïe dans les plus brefs délais.

⚠ **WARNING:** It is rare but possible for seizures to be triggered by light flashes or patterns such as those on computer or TV screens. To reduce exposure to this potential hazard, play/watch TV in a well-lit room, sit an appropriate distance from the screen and take 10- to 15-minute breaks every hour.

Parent Note: The Photosensitive Seizure notice on the screen will last up to 8 seconds to allow for reading. After first use, you may press the A, B or D-pad buttons and the notice will disappear within 3 seconds.

⚠ **AVERTISSEMENT :** Il peut arriver que certaines personnes soient sujettes à une attaque sous l'effet d'une lumière vive ou d'un jeu de lumières provenant de l'écran d'un téléviseur ou d'un ordinateur. Pour réduire ce risque, utilisez le téléviseur dans une pièce suffisamment éclairée, installez-vous à une distance raisonnable de l'écran et faites une pause toutes les heures, pendant 10 à 15 minutes.

Remarque à l'intention des parents : L'avertissement concernant l'épilepsie photosensible s'affichera sur l'écran pendant 8 secondes afin d'en permettre la lecture. Après la première utilisation, vous pouvez appuyer sur les boutons A, B ou D du pavé directionnel et cette mise en garde disparaîtra au bout de 3 secondes.

Power Adapter Safety

(Adapter sold separately; available from LeapFrog Enterprises, Inc.)

⚠ **WARNING:** Adapter cord could be a strangulation hazard.

⚠ **CAUTION—ELECTRIC TOY**

Not recommended for children under 3 years of age. As with all electrical products, precautions should be observed during the handling and use to prevent electrical shock. FOR INDOOR, DRY-LOCATION USE ONLY.

The transformer is not a toy and should be connected to the wall outlet by an adult. It should be periodically examined for conditions that may result in the risk of fire, electrical shock or injury to persons, such as damage to the cord, plug, blades, housing or other parts, and in the event of such conditions, the transformer must not be used until the damage is repaired.

- The toy must be used only with the recommended transformer.
- The toy is not to be connected to more than the recommended number of power supplies.
- Toys to be cleaned with a liquid are to be disconnected from the transformer before cleaning.



- To clean transformer, disconnect it from the wall and clean with a cloth dampened with water. Do not immerse in water or use soap or other chemicals. Allow to dry before reusing. Do not connect to the AC outlet if wet or damaged.

AC Adapter Electrical Ratings:

US, CAN Input: ~ 120VAC, 60Hz

UK Input: ~ 230V, 50Hz

Australia and New Zealand Input: ~ 240V, 50Hz

Output: DC9V, 700mA, 6.3mA

Consignes de sécurité pour l'utilisation de l'adaptateur

(Adaptateur vendu séparément ; produit LeapFrog Enterprises, Inc.)

⚠ **AVERTISSEMENT :** Le cordon de l'adaptateur peut provoquer un risque d'étranglement.

⚠ **ATTENTION : CE JOUET FONCTIONNE À L'ÉLECTRICITÉ**

Ne convient pas aux enfants de moins de 3 ans. Comme tous les objets utilisant du courant électrique, ce produit doit être manipulé avec précaution pour éviter tout risque de décharge électrique. A UTILISER UNIQUEMENT EN INTERIEUR, DANS UN ENDROIT SEC.

Le transformateur n'est pas un jouet et il est recommandé que ce soit un adulte qui le branche à la prise murale. Pour éviter tout danger d'incendie, d'électrocution ou de blessure, veillez à contrôler périodiquement l'état du cordon électrique, de la fiche d'alimentation électrique, des lames de contact, du boîtier ou de toute autre partie. Dans un tel cas, le transformateur doit être réparé avant d'être réutilisé.

- Le jouet doit seulement être utiliser avec l'adaptateur recommandé.
- Le jouet ne doit pas être branché à plus d'accessoires que le nombre recommandé.
- Débrancher le jouet de l'adaptateur avant de le nettoyer avec du liquide.
- Pour nettoyer l'adaptateur, débranchez-le d'abord de la prise murale et utilisez ensuite un tissu humide pour le nettoyer.

Voltage de l'adaptateur

Voltage d'entrée pour les Etats-Unis et le Canada : ~120VAC, 60Hz

Voltage d'entrée pour le Royaume Uni : ~230V, 50Hz

Voltage d'entrée pour l'Australie et la Nouvelle Zélande : ~240V, 50Hz

Voltage de sortie : DC9V, 700mA, 6.3VA

USB Cable

Use only the USB cable provided by LeapFrog Enterprises Inc. Using any other cable may exceed FCC and other regulatory emissions limits. The USB cable is not a toy. Disconnect the toy from the USB connection before cleaning.

Câble USB


Utilisez exclusivement le câble USB fourni par LeapFrog Enterprises Inc. L'utilisation d'un autre câble peut dépasser les limites de la FCC (Commission fédérale américaine des communications) et autres limites réglementaires en matière d'émission. Le câble USB n'est pas un jouet. Déconnectez le jouet du port USB avant d'entamer toute opération de nettoyage.

FCC NOTICE:

This device complies with Part 15 of the FCC rules. Operation is subject to the following two conditions: 1) This device may not cause harmful interference, and 2) This device must accept any interference received, including interference that may cause undesired operation.



Troubleshooting

Symptom	Try This
Handheld does not turn on or does not respond	<p>Make sure the handheld is on</p> <p>Make sure batteries are correctly installed</p> <p>Make sure the battery covers are securely attached</p> <p>Remove batteries and put them back in</p> <p>Clean battery contacts by rubbing lightly with a soft eraser and then wiping with a clean and dry cloth</p> <p>Install new batteries</p>
Display stops working	<p>Adjust contrast controls on the My Didj screen and brightness controls on the side of the handheld</p> <p>Install new batteries</p>
System screen shows: Please Restore System	<p>Press the On/Off button to turn the device off and then on again</p> <p>Connect the handheld to an Internet-connected computer and open the LEAPFROG® Connect Application to restore the system</p>
Handheld screen shows: Download in Progress	<p>Do not disconnect the USB cable from the device or computer while a download is in progress</p> <p>If the cable is disconnected, please reconnect the device to the computer to complete the download</p>
LEAPFROG® Connect CD does not install correctly	<p>Go to leapfrog.com/didj to download the LEAPFROG® Connect Application</p>
Product freezes or locks up	<p>PARENT: Insert the end of a paper clip into the RESET  pinhole on the bottom of the product.</p>

This equipment has been tested and found to comply with the limits for a Class B digital device pursuant to Part 15 of the FCC rules. These limits are designed to provide reasonable protection against harmful interference to radio communications. Because this toy generates, uses and can radiate radio frequency energy, there can be no guarantee that interference will not occur. If this toy does cause interference to radio or television reception (you can check this by turning the toy off and on while listening for the interference), one or more of the following measures may be useful:

- Reorient or relocate the receiving antenna
- Increase the separation between the toy and the radio or the TV
- Consult the dealer or an experienced TV-radio technician for help

NOTE: Changes or modifications to this unit not expressly approved by LeapFrog Enterprises, Inc., could void the user's authority to operate the equipment.

This Class B digital apparatus complies with Canadian ICES-003.

Cet appareil numérique de la classe B est conforme à la norme NMB-003 du Canada.

Environmental Phenomena

- The unit may malfunction if subjected to radio-frequency interference. It should revert to normal operation when the interference stops. If not, it may become necessary to turn the power off and back on, reset the unit or remove and reinstall the batteries.

- In the unlikely event of an electrostatic discharge, the unit may malfunction and lose memory, requiring the user to reset the device by removing and reinstalling the batteries.

Impact de l'environnement

- Une défaillance de fonctionnement de l'appareil peut survenir s'il est sujet à des interférences avec les fréquences radioélectriques. Le fonctionnement normal de l'appareil devrait reprendre avec l'arrêt des interférences. Si ce n'est pas le cas, il peut s'avérer nécessaire d'éteindre et rallumer l'appareil ou de retirer et réinstaller les piles.
- Dans l'éventualité peu probable d'une décharge électrostatique, un mauvais fonctionnement et une perte de mémoire de l'appareil peuvent se produire. L'utilisateur doit alors retirer et réinstaller les piles pour réinitialiser l'appareil.

U.S. Consumer Service Contact: Visit our U.S. Consumer Support website at <http://www.leapfrog.com/support> 24 hours a day, or call (800) 701-LEAP (5327) during normal business hours.

Canada Consumer Service Contact: Visit our Canada Consumer Support website at <http://lfcanda.custhelp.com> 24 hours a day, or call (800) 701-LEAP (5327) during normal business hours.

U.K. Consumer Service Contact: Visit our U.K. Consumer Support website at <http://leapfroguk.custhelp.com> 24 hours a day, or call 0800 169 5435, or Eire +44 1702 200244, during normal business hours.

Australia Consumer Service Contact: Please submit questions to our support staff via email at info@funtastic.com.au or free-call 1800 244 543 during normal business hours.

IMPORTANT: If you have a problem with this product, return it to the retailer where the product was purchased for exchange. If the retailer is unable to assist you for any reason, contact LeapFrog Consumer Services. If our service representative is unable to help you resolve the problem, you will be given instructions on how to replace the product and an authorization number. Returns must have a Return Merchandise Authorization (RMA) number to be accepted at our warehouse. If you need replacement parts for this product, please contact LeapFrog Consumer Services.

LIMITED WARRANTY: Subject to a limited three (3) month warranty. Please call Consumer Support at the number listed above or see our website at leapfrog.com for full details of the warranty provided in your country. LeapFrog shall not be liable for any incidental or consequential damages for the breach of any warranty on this product. Some jurisdictions do not allow the exclusion or limitation of incidental or consequential damages, or limitation on how long an implied warranty lasts, so the above limitations or exclusions may not apply to you.

LEAPFROG, the LeapFrog logo, the LeapFrog Learning Path logo, SEE THE LEARNING, DIDJ and the Didj logo are registered trademarks or trademarks of LeapFrog Enterprises, Inc. Copyright © 2008 LeapFrog Enterprises, Inc. All rights reserved.

leapfrog.com

For ages 6 to 10 years.

Convient aux enfants de 6 ans à 10 ans.

Part No. 605-11234-B